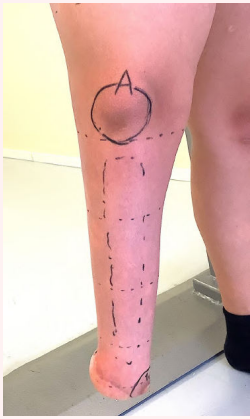


Pear-shape

Example 1



Example 2



Example 3



With Your® Liner

Limb



3D model



Your® Liner



Indication

Residual limbs exhibit a pear-shaped distal end (at least one distal circumference is substantially larger than a more proximal circumference).



Key features



Anatomically tailored



Pear-shape compensation



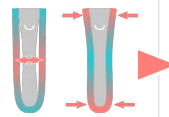
Configurable suspension

Typical issues

Off-the-shelf liner is too wide / too tight

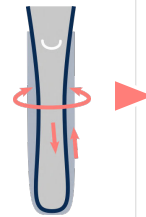
A liner fitting the distal protrusion and the proximal segment can be too-wide to properly fit the thin mid-stump segment, thus leaving air pockets between the liner and the skin.

Alternately, a liner matching the thin mid-stump segment can be too tight for the distal protrusion and proximal segment, and apply excessive compressions in some areas of the residual limb.



Sub-optimal suspension with soft-socket

To compensate the pear-shape, soft sockets (pelite liners) are often used. For pear-shaped stumps, such soft sockets often include a longitudinal opening so the stump can be inserted into it, which leads to a loose fit. Such pelite liners can therefore provide a loose fit and can lead to rotation inside the socket, and pistoning movement.



Other socket adaptations

Other ways to compensate the pear shape include socket inserts, boa systems, openings in socket, modular sockets, etc. Such socket types can come with their limitations, such as loose fit and in-socket movements, substantial extra work for the CPO, difficult socket donning for the patient, and sub-optimal socket design leading to non-homogeneous weight-bearing and pressure peaks.

Adapted shape and compressions

With its custom shape and adapted compressions, Your® Liner provides a close fit and adequate compressions all over the limb, eliminating the issue of too-high or too-low compressions, and of air pockets between the liner and the stump.

Compensated liner & in-socket vacuum suspension

The possibility of controlling the local thicknesses enables the possibility to perfectly compensate the pear-shape to obtain a cylindrical shape able to normal socket (no need for soft socket, inserts, boa, modular systems, etc.).

Compensating the pear-shapes further enables the use of our "Suction" suspension for In-socket vacuum suspension (without sleeve).

How can Your® Liner help ?

