

Congenital

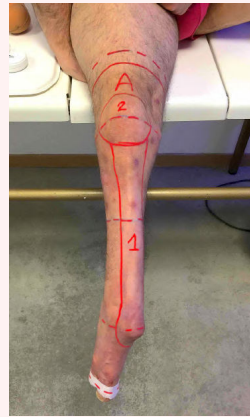
Example 1



Example 2



Example 3



With Your® Liner

Limb



3D model



Your® Liner



Indication

Residual limb presents a congenital birth defect. Overall shape and limb constitution is not comparable to residual limbs resulting from amputation procedures (e.g. transtibial, transfemoral)



Typical issues

No suitable off-the-shelf liner available

Off-the-shelf liners are designed for common amputation cases. Very often, limbs with congenital birth defects exhibit shapes and functions for which off-the-shelf liners are unadapted (e.g. no suitable size, inadapted compressions, unadapted thickness profiles, etc.)



Key features



Anatomically tailored



Adapted compressions



Your® Liner

With its anatomically tailored shape, adapted compressions, and possibility to customise the local thicknesses, Your® Liner allows to design a unique liner, with properties specifically adapted to the needs of each individual limb with congenital birth defect.

How can Your® Liner help ?

